



*Supplement of*

## **Seedless fruits mask germination response to key environmental factors**

**Patricio Garcia-Fayos**

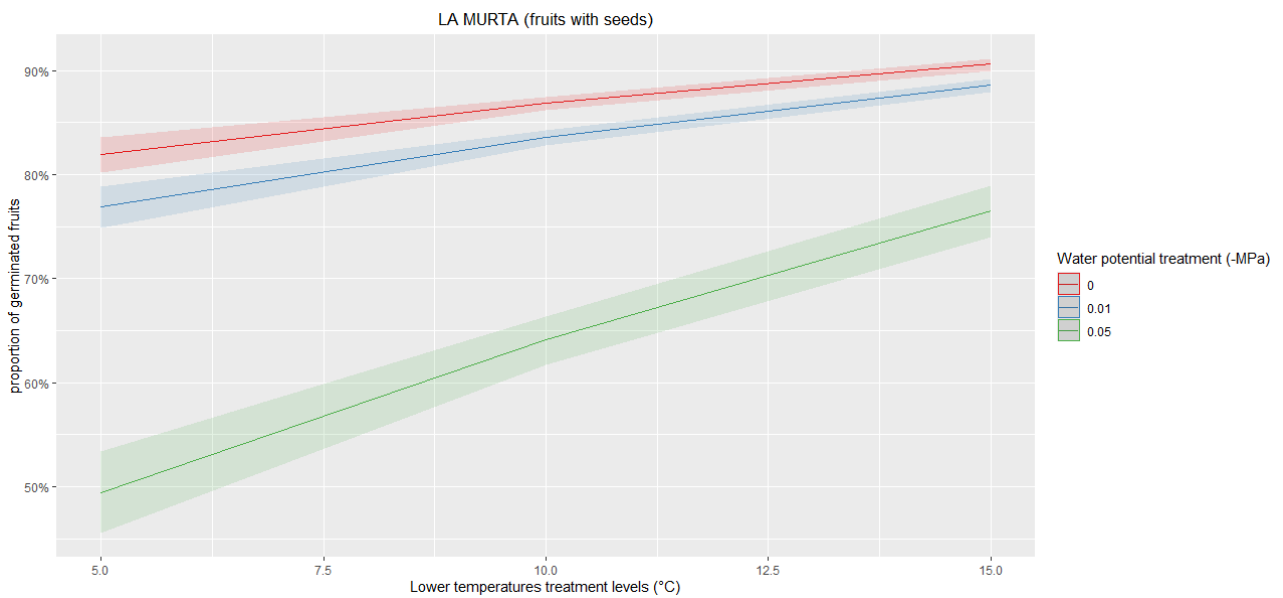
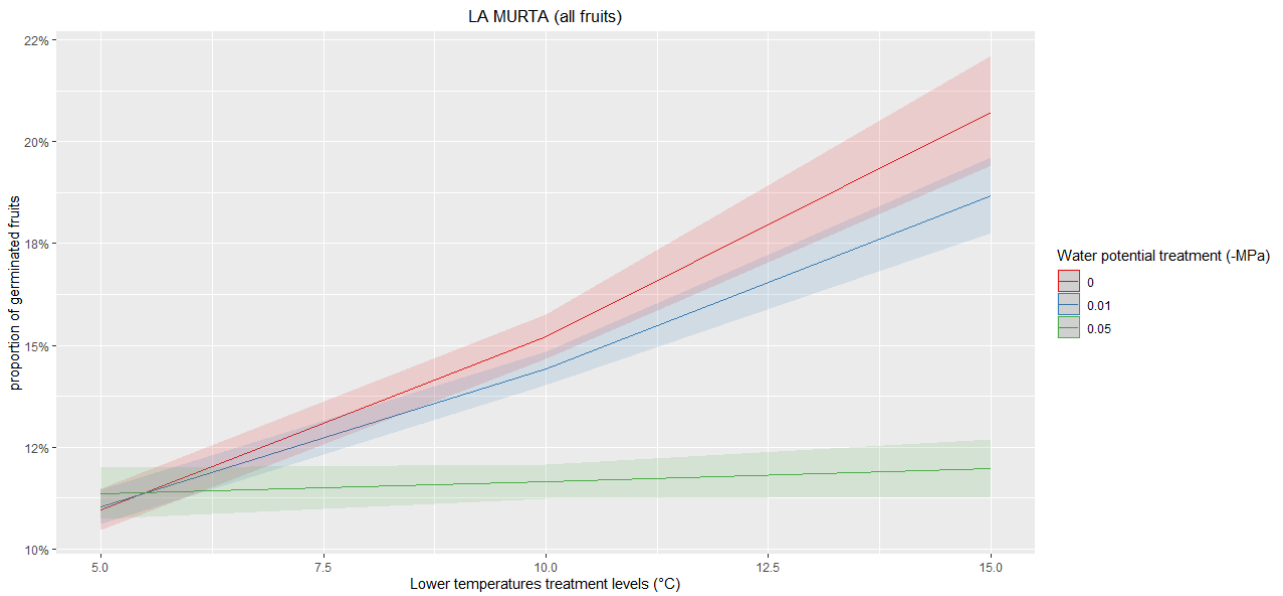
*Correspondence to:* Patricio Garcia-Fayos ([patricio.garcia-fayos@ext.uv.es](mailto:patricio.garcia-fayos@ext.uv.es))

The copyright of individual parts of the supplement might differ from the article licence.

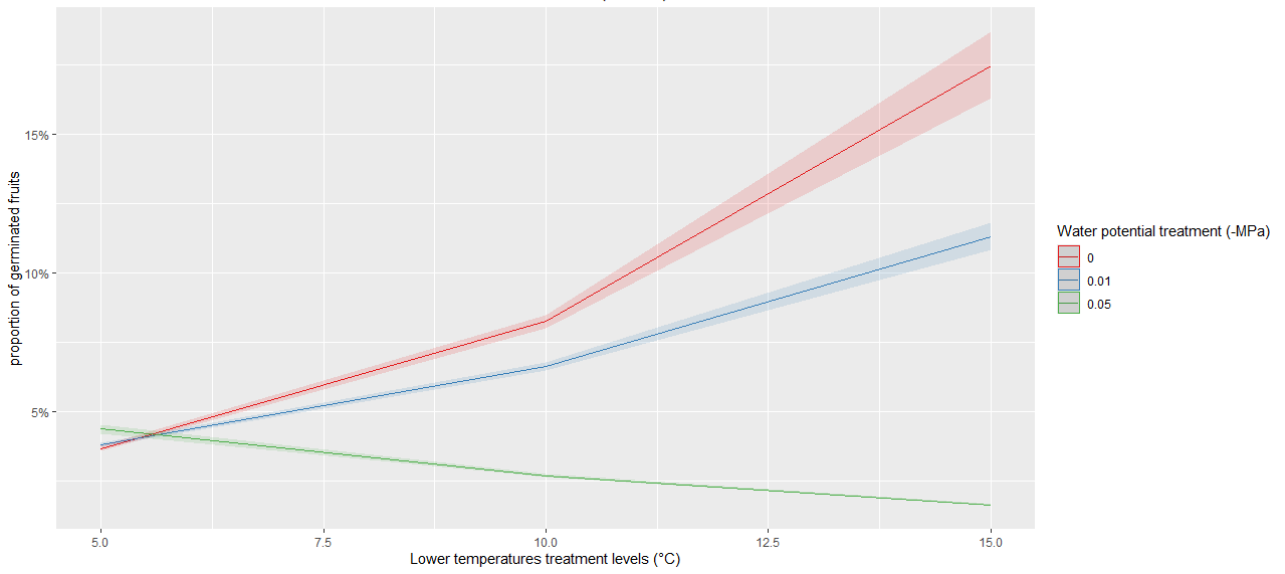
## Supplementary material

Figure S1

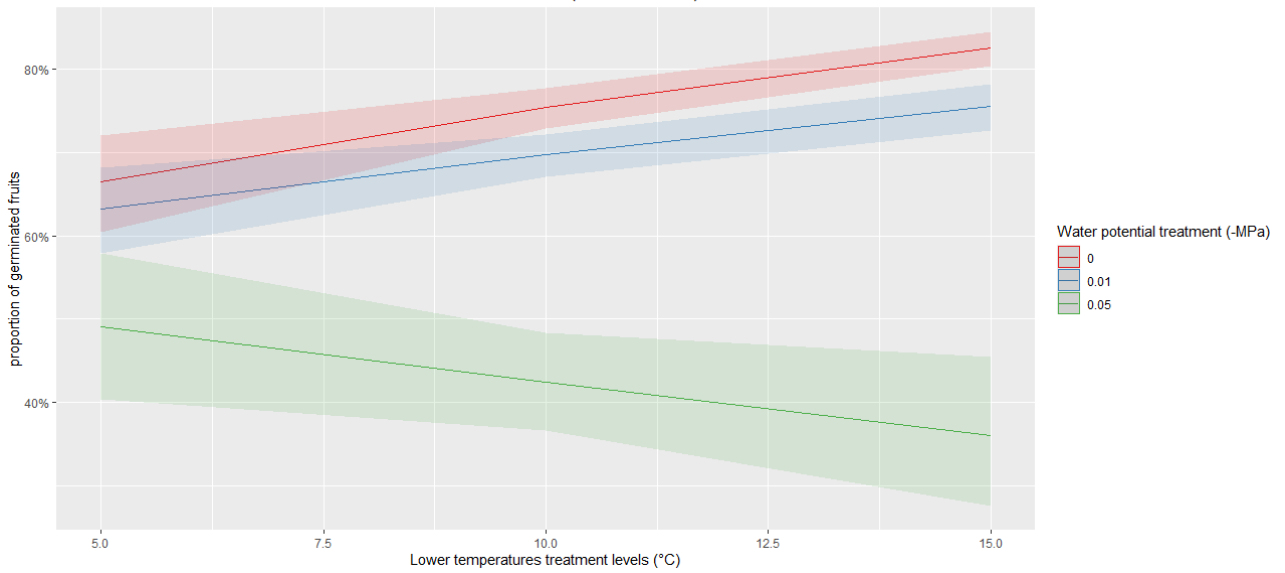
Germination values predicted by the models, calculated using all fruits or using only those containing seeds, as a function of temperature (5–15, 10–20, 15–25 °C; represented by the lowest temperature in each range) and water potential (0, -0.01, -0.05 MPa; represented by their positive values), for each of the four populations studied.



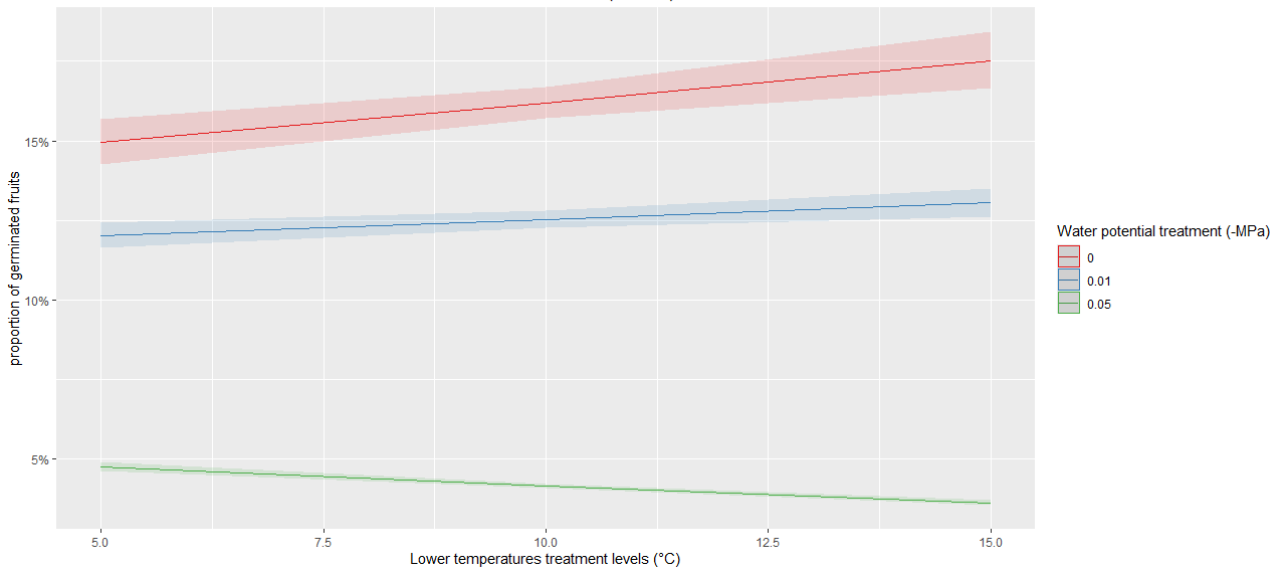
POBLA DE VALLBONA (all fruits)



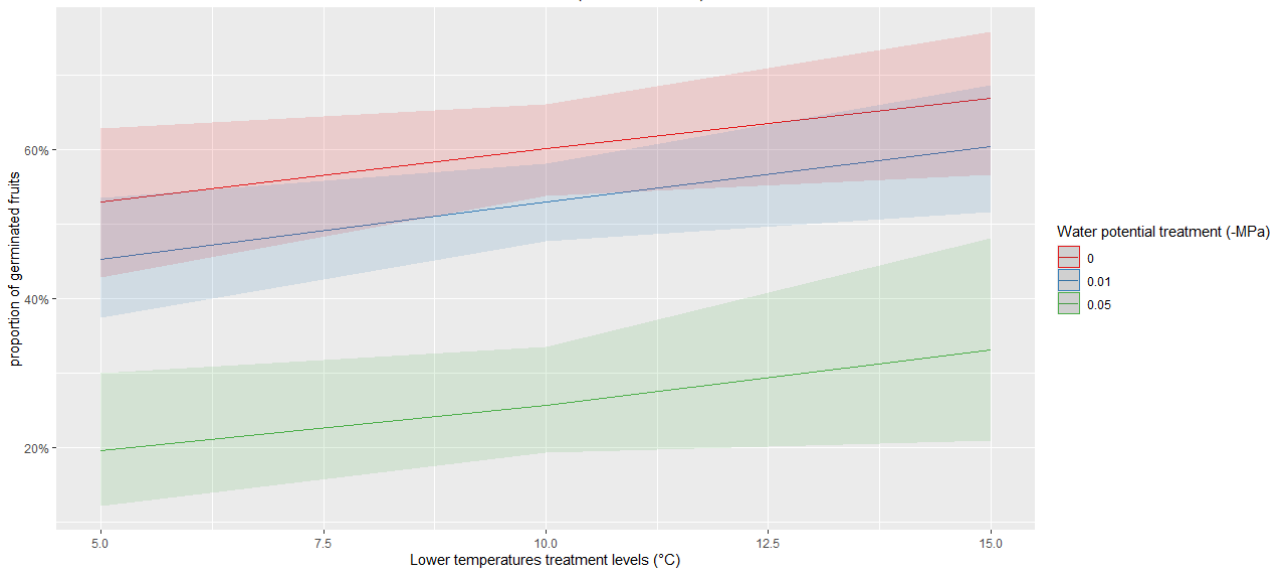
POBLA DE VALLBONA (fruits with seeds)



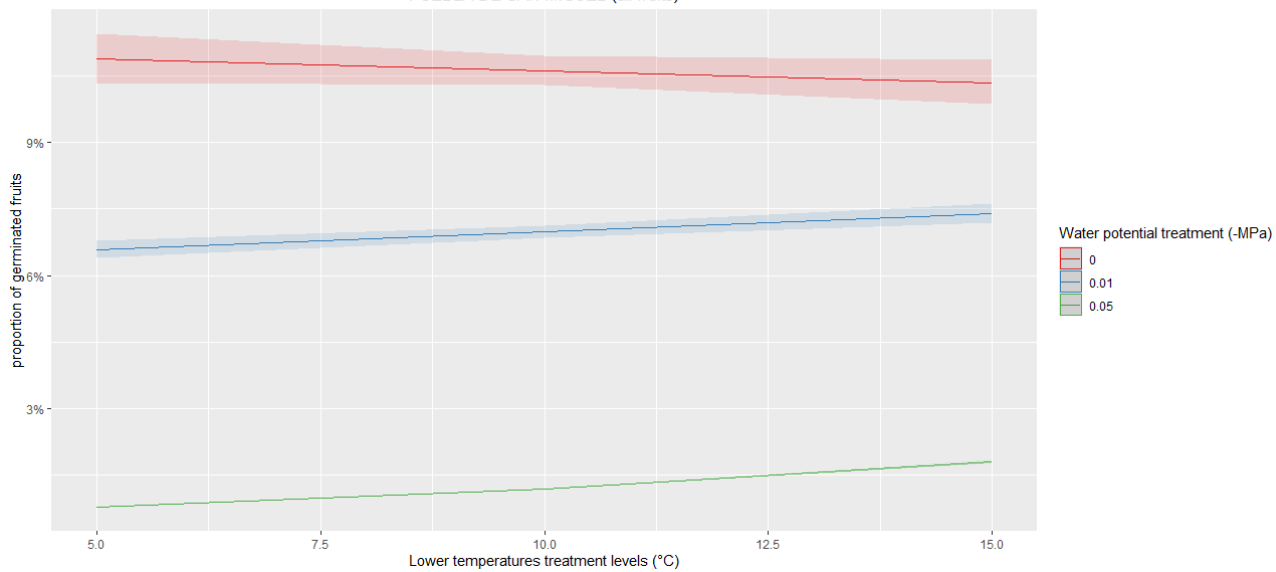
BARRANC DELS HORTS (all fruits)



BARRANC DELS HORTS (fruits with seeds)



PUEBLA DE SAN MIGUEL (all fruits)



PUEBLA DE SAN MIGUEL (fruits with seeds)

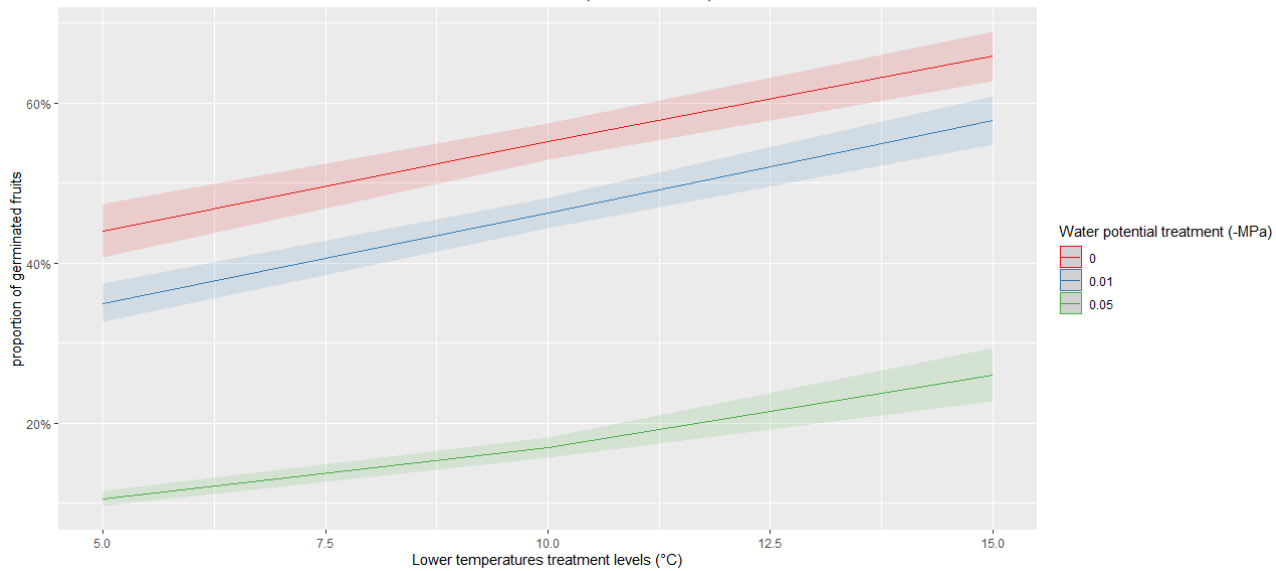
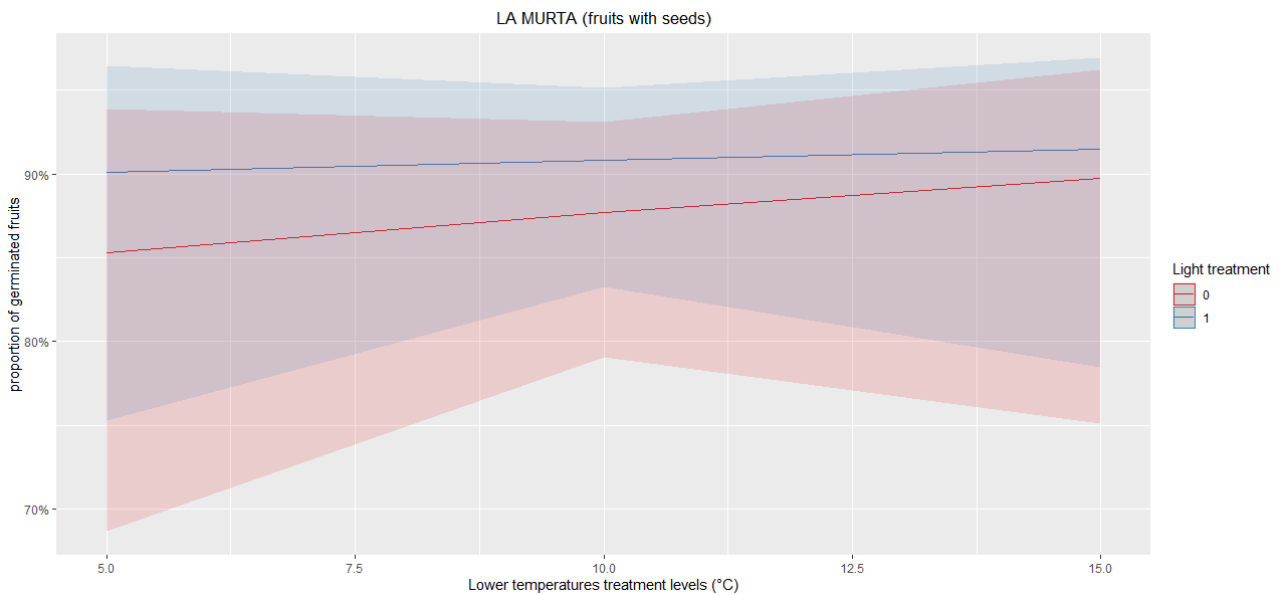
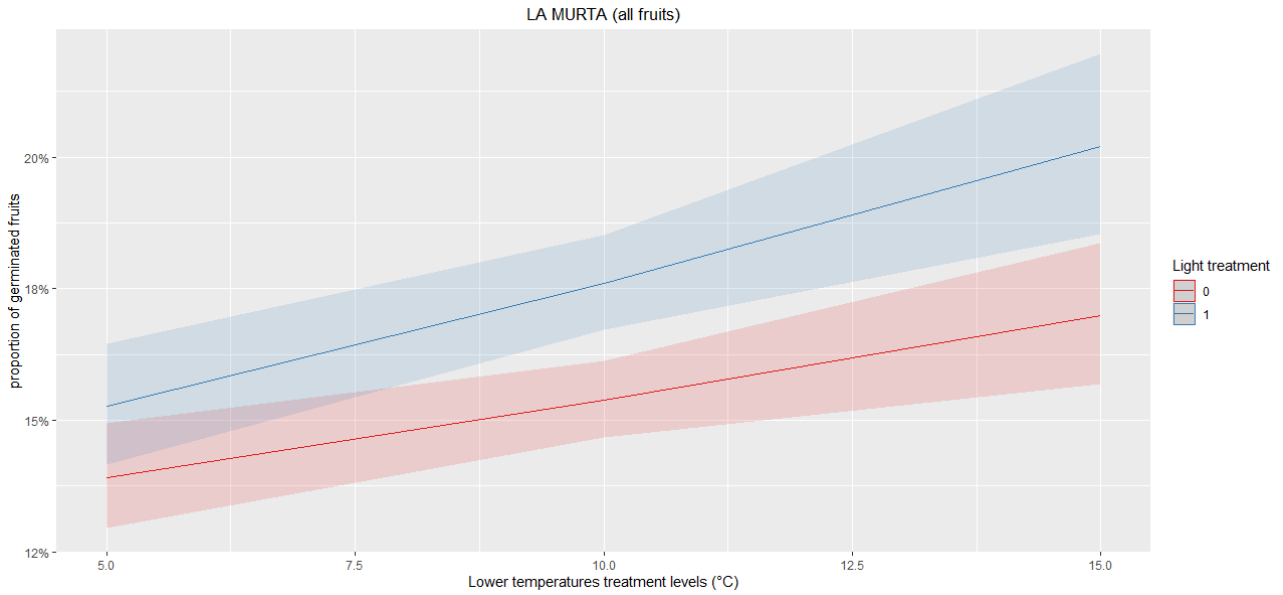
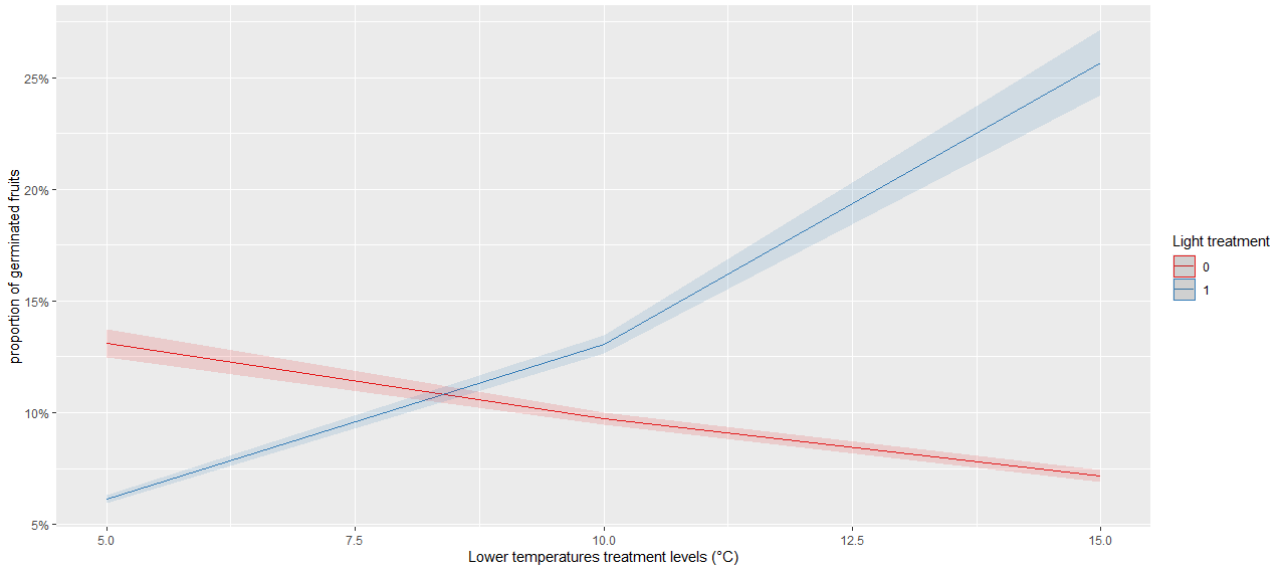


Figure S2

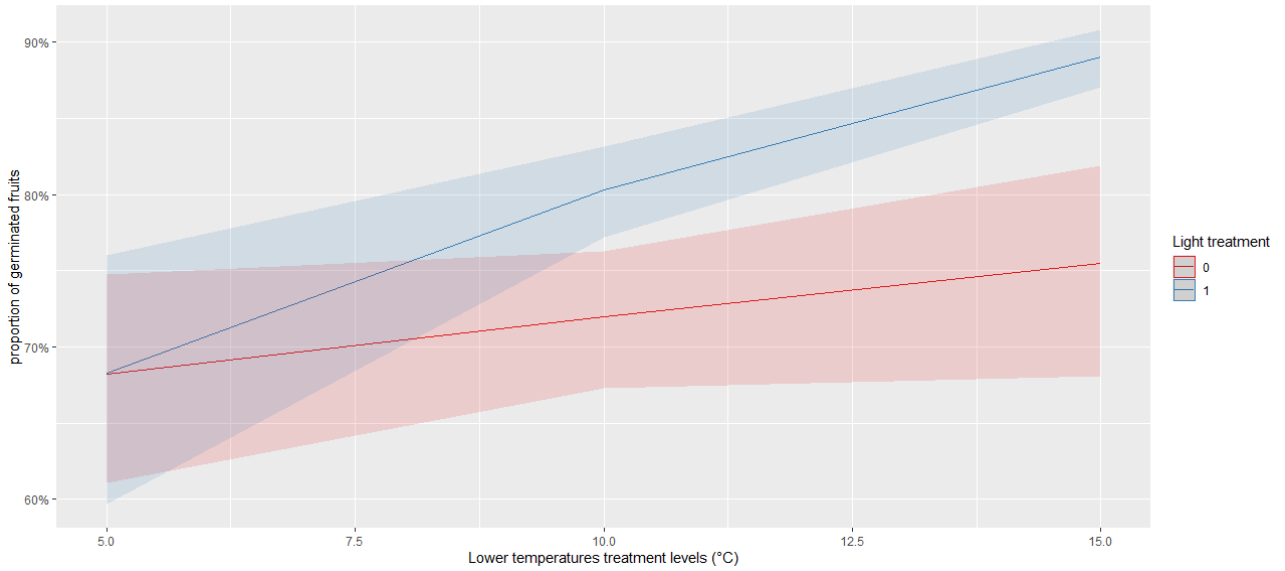
Germination values predicted by the models, calculated using all fruits or using only those containing seeds, as a function of temperature (5–15, 10–20, 15–25 °C; represented by the lowest temperature in each range) and light (0: darkness, 1: 12/12 h photoperiod), for each of the four populations studied.



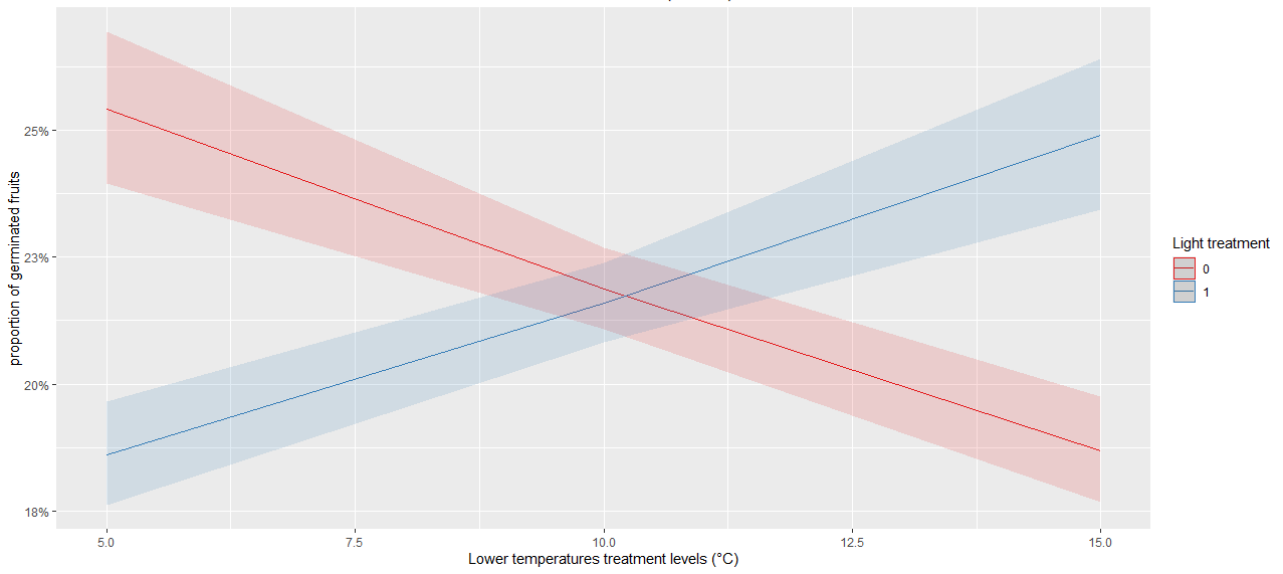
POBLA DE VALLBONA (all fruits)



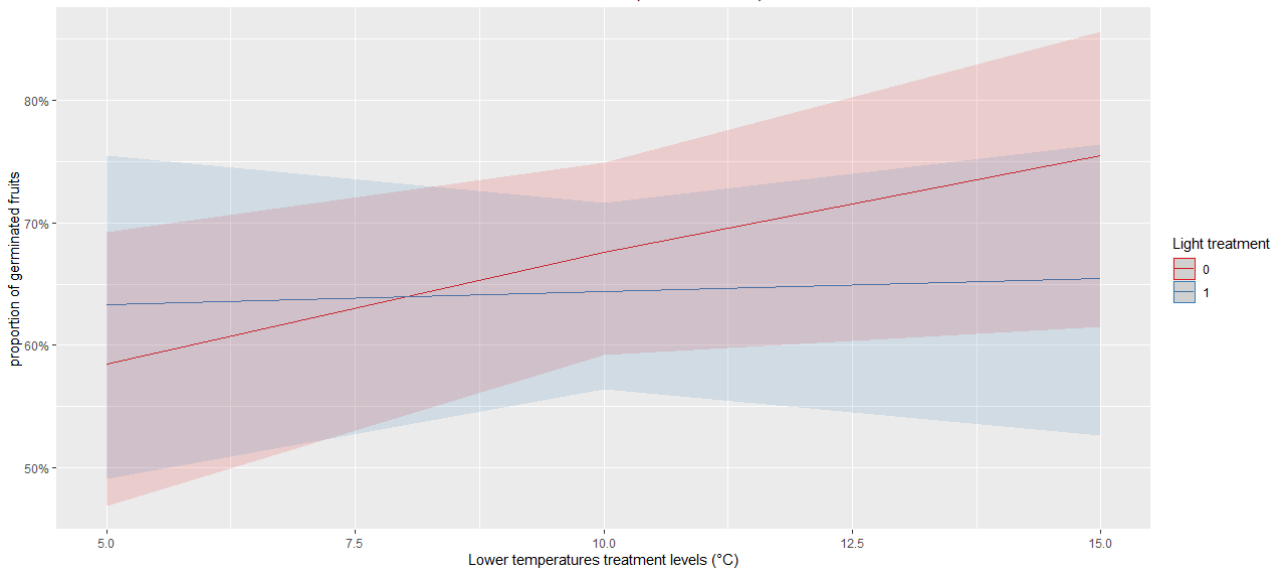
POBLA DE VALLBONA (fruits with seeds)



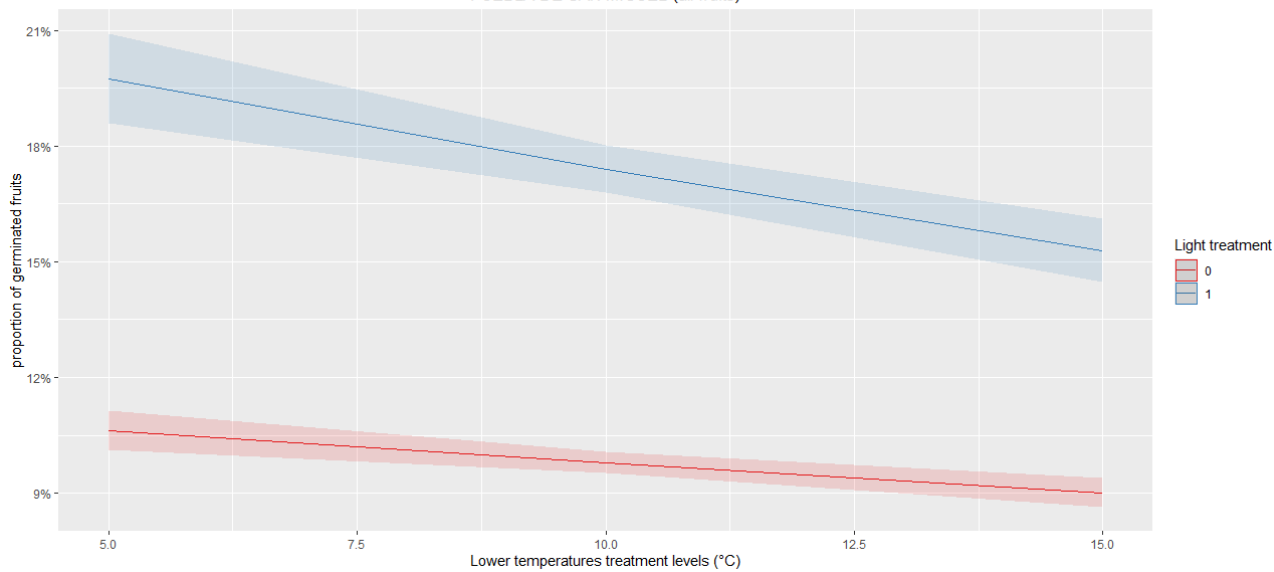
BARRANC DELS HORTS (all fruits)



BARRANC DELS HORTS (fruits with seeds)



PUEBLA DE SAN MIGUEL (all fruits)



PUEBLA DE SAN MIGUEL (fruits with seeds)

